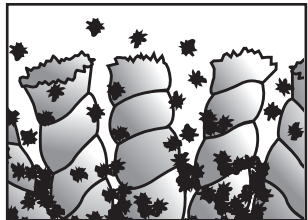


CLAUSEN

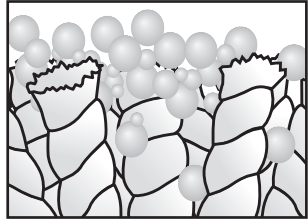
CARPET SOLUTIONS



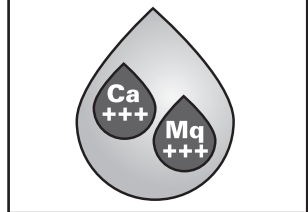
**ALL SYNTHETIC, NO
STICKY RESIDUE**



**PENETRATES, LIFTS,
REMOVES HEAVY SOIL**



**CLEANS WITH ITS
DRY FOAM**



**HARD WATER
TOLERANT**

DISTRIBUTED BY:

SUPER 21

RUG SHAMPOO FOR ALL ROTARY AND FOAMER SHAMPOO MACHINES

DESCRIPTION

Clausen Super 21 Rug & Upholstery Shampoo is a highly concentrated complex of modern free rinse synthetic detergents. Its dry foam penetrates, solubilizes and lifts stubborn soil with a minimum of wetting. It deodorizes as it cleans and is safe to use on all colorfast rugs and upholstery.

HOW TO USE:

PROCEDURE

1) Vacuum carpet to remove loose soil. 2) Spot clean or pretreat heavily soiled areas with Pre-Treat 61. 3) Release shampoo sparingly - avoid over-wetting, cover all areas uniformly. 4) If rug or carpet is of cut pile, while still damp, rake or brush in one direction. 5) Allow to dry thoroughly before opening to traffic.

DILUTIONS

SOIL CONDITIONS	LIGHT	MEDIUM	HEAVY
ROTARY MACHINES Ratio Super 21 to water.	4 oz. 1 to 32	8 oz. 1 to 16	12 oz. 1 to 8
FOAM MACHINES Ratio Super 21 to water	12 oz. 1 to 8	12 oz. 1 to 8	12 oz. 1 to 8



USES

Formulated for use with all makes of rotary and foam machines for shampooing all colorfast rugs and upholstery not affected by water alone.

BENEFITS

SUPER CONCENTRATED - Contains the finest ingredients in a more concentrated form for better cleaning and more economical use.

HIGH, DRY FOAM - Develops a thick, stiff foam that lifts and suspends gritty soil.

SUPER DETERGENCY - Penetrates and dissolves oily, greasy soil.

ALL SYNTHETIC - For maximum effectiveness in hard water. No soap film.

DEODORIZES - Contains a proven odor counteractant to erase foul odors in rugs and the surrounding area.

SAFE TO USE - There's nothing in Clausen's Super 21 to harm the best quality rugs, carpets or upholstery.

SPECIFICATIONS

APPEARANCE.....Clear liquid
ODOR.....Characteristic odor
pH.....8.0 + 0.5
FLASH POINT.....none to boiling
BOILING POINT.....near 212°F
SPECIFIC GRAVITY.....1.061 + 0.0005
SHELF LIFE.....One year minimum

PACKAGING

Available in gallons.



Folcroft, PA 19032-0037 • Telephone 610-534-8900 • 800-444-8900 • Fax 610-534-8912 • www.clausencarpet.com